



H31-161^{Q&As}

HCIE-Carrier IP (Written) V2.0

Pass Huawei H31-161 Exam with 100% Guarantee

Free Download Real Questions & Answers **PDF** and **VCE** file from:

<https://www.passapply.com/h31-161.html>

100% Passing Guarantee
100% Money Back Assurance

Following Questions and Answers are all new published by Huawei
Official Exam Center

-  **Instant Download** After Purchase
-  **100% Money Back** Guarantee
-  **365 Days** Free Update
-  **800,000+** Satisfied Customers





QUESTION 1

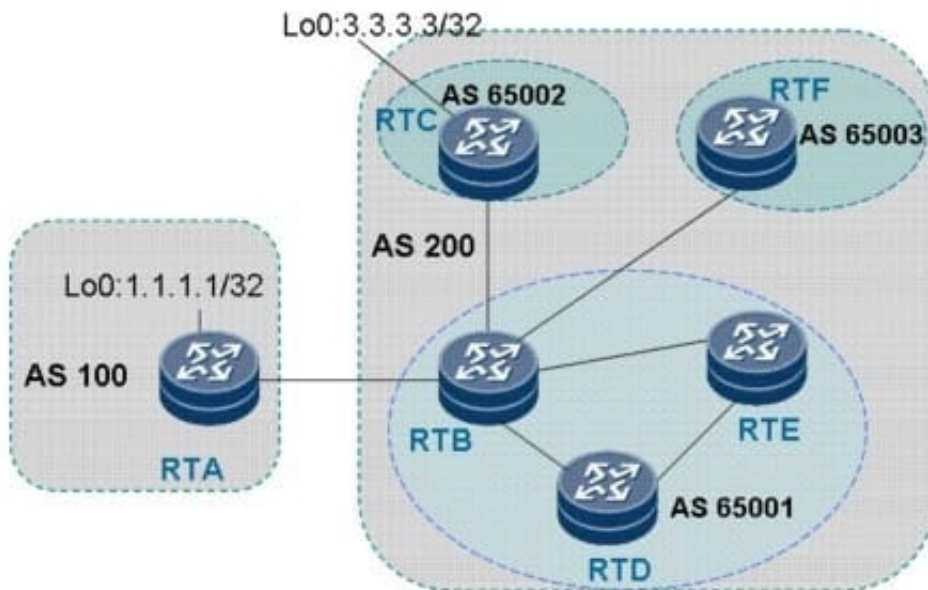
If a (*,) entry exists in the RP, Which of the following statements about the source registration are true in PIM_SM?

- A. The first hop DR connecting to the source encapsulate received multicast into PIM registration information and unicast the encapsulated information to the PR.
- B. The RP sends an (S, G) join message hop by hop to the first hop DR connected to the multicast source to add the multicast source to the SPT.
- C. The first-hop RD connecting to the source sends received multicast data to the RP hop by hop.
- D. The RP encapsulates registration information and uses RTP to send data packet to be sent to the multicast group to the outbound interface.
- E. The RP unicast a registration stop message to the first router connection to the multicast source.

Correct Answer: E

QUESTION 2

Refer to the exhibit.



As shown in the figure, RTA belongs to AS 100 and has an EBGP neighbor relationship with RTB. RTB, RTC, RTD, RTE, and RTF belong to AS 200. RTB, RTD, and RTE are assigned to AS65001, RTC to AS65002, and RTF to AS65003.

- 1.
- When route 1.1.1.1/32 is imported from RTA, what is the AS_Path attribute of this route to be advertised to RTF?
- 2.



When route 1.1.1.1/32 is imported from RTC, what is the AS_Path attribute of this route to be advertised to RTA?

3.
When route 1.1.1.1/32 is imported from RTC, what is the AS_Path attribute of this route to be advertised to RTE?

The attributes are as follows:

- A. (65001) 100; 200; (65002)
- B. (65001) 200 100; (65002) (65001) 200; (65002)
- C. (65003) (65001) 200 100; 200; 200
- D. 100; 200; empty

Correct Answer: A

QUESTION 3

RTA is a leaf router that directly connects to host A through interface GigabitEthernet 1/0/0. The interface is configured as follows: interface GigabitEthernet1/0/0 undo shutdown ip address 192.168.4.2 255.255.255.0 pim sm igmp enable igmp version 3 igmp ssm-mapping enable igmp static-group 232.1.1.1 Configurations in the IGMP view are as follows: igmp ssm-mapping 232.1.1.0 255.255.255.0 10.10.1.1

ssm-mapping 232.1.2.0 255.255.255.0 10.10.1.1

Host A sends an IGMPv2 Report message to group 232.1.2.2. Which entry can be displayed by the display igmp ssm-mapping group command?

- A. (10.10.1.1, 232.1.1.1)
- B. (10.10.1.1, 232.1.2.2)
- C. (10.10.1.1, 232.1.1.1) and (10.10.1.1, 232.1.2.2)
- D. No entry

Correct Answer: C

QUESTION 4

Exhibit.



As shown in the figure, RTA connects to RTB and RTC A TE tunnel is configure on RTA to reach RTC. The TE tunnel



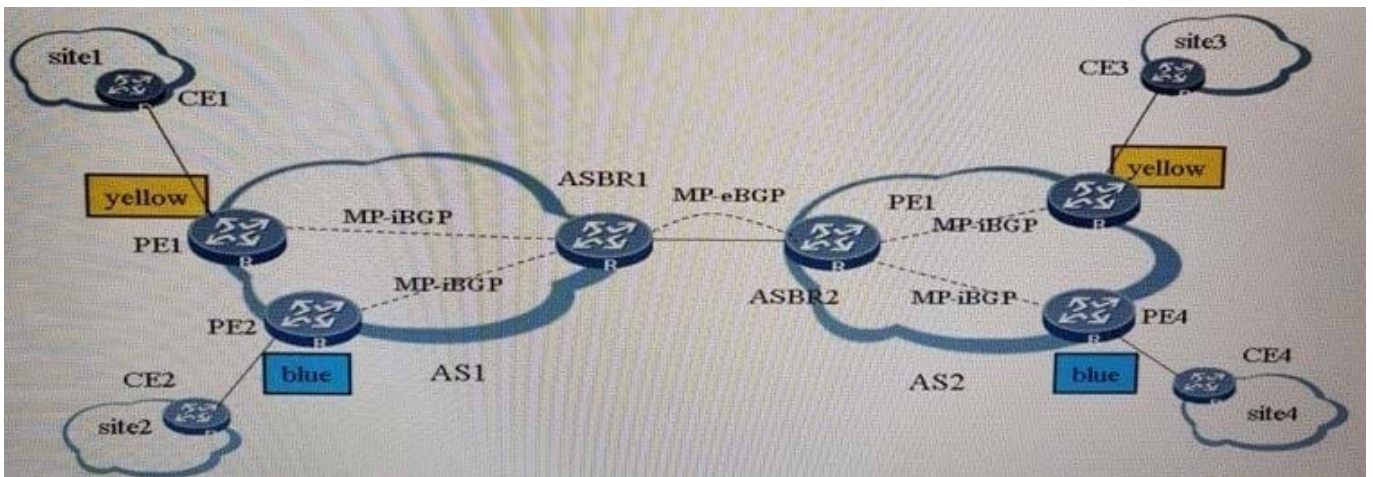
cannot be successfully established. However, CSPF-based calculation is successful and RTA does not receive any PathError messages. What are possible causes?

- A. An interface address on RTP is the same as the address of interface RTA-1.
- B. RSVP-TE is not configured at interface RTB-2.
- C. Different authentication keys are configured on interface RTB-2 and RTC-1.
- D. The reserved bandwidth is insufficient at interface RTB-2

Correct Answer: D

QUESTION 5

Exhibit.



Which statement about inter-AS MPLS VPN Option_B is false?

- A. The ASBR cannot be used as a PE simultaneously and a CE cannot be connected to an ASBR.
- B. When ASBRs are directly connected, packets transmitted on the VPN between them have only one label.
- C. The undo policy vpn-target command must be configured in the VPN4 address family view of the BGP neighbor of the ASBR to prevent routes from being filtered automatically.
- D. When ASBRs are directly connected, VPN traffic can be forwarded between them only after MPLS is enabled on the interfaces.

Correct Answer: A

QUESTION 6

If a (*, G) entry exists in the RP, which of the following statements about the source registration process are true in PIM-SM?

- A. The first hop DR connecting to the source encapsulates received multicast data into PIM registration information and



unicasts the encapsulated information to the RP.

- B. The first-hop DR connecting to the source sends received multicast data to the RP hop by hop.
- C. The RP decapsulates registration information and uses RPT to send data packets to be sent to the multicast group to the outbound interface.
- D. The RP sends an (S, G) Join message hop by hop to the first hop DR connected to the multicast source to add the multicast source to the SPT.
- E. The RP unicasts a registration stop message to the first hop router connected to the multicast source.

Correct Answer: ACDE

QUESTION 7

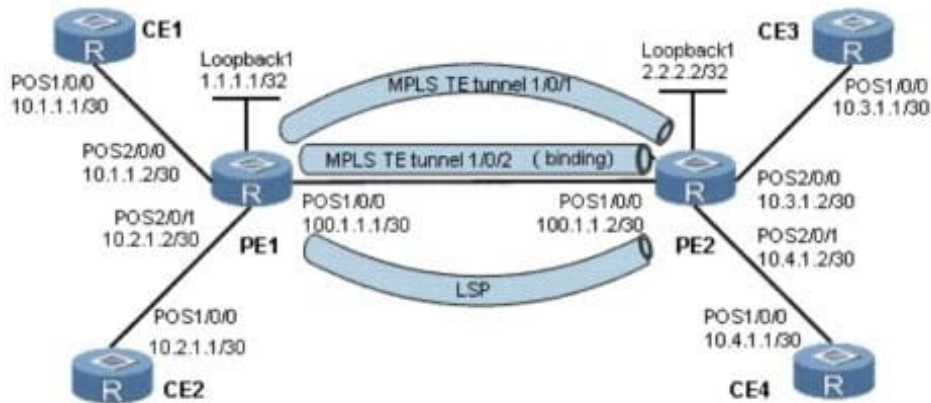
Which of the following statements about the fault notification in VLL FRR are true?

- A. A forwarding fault occurs on the public network side of the primary PW. If BFD for PW (detection interval: 300 ms) is enabled on the primary PW, BFD fast detects the fault and sends a notification to the L2VPN for PW switching.
- B. A forwarding fault occurs on the public network side of the primary PW. If BFD for PW is not enabled on the primary PW, the L2VPN cannot perceive the fault on the PSN side and therefore PW switching is not triggered.
- C. The primary PW is carried over an LDP LSP tunnel on the public network side and BFD for LDPLSP (detection interval: 30 ms) is enabled on the LDP LSP tunnel. If a forwarding fault occurs on the public network side of an LSP tunnel, BFD fast detects the fault and sends a notification to the L2VPN for PW switching.
- D. The primary PW is carried over a GRE tunnel on the public network side and BFD for PW (detection interval: 30 ms) is enabled on the GRE tunnel. If a forwarding fault occurs on the PSN side of the primary PW, BFD cannot detect the fault because the PW is carried over a GRE tunnel. In this case, the L2VPN needs to detect the fault itself and triggers PW switching.

Correct Answer: AC

QUESTION 8

Refer to the exhibit.



This figure shows the MPLS L3VPN networking. CE 1 and CE 3 belong to VPN A. CE 2 and CE 4 belong to VPN B. Two MPLS TE tunnels (5 Mbit/s and 10 Mbit/s) and an LSP tunnel are set up between PE 1 and PE 2. It is expected that a tunnel policy is configured on PE 1 to distribute traffic in the three tunnels and MPLS TE tunnels are preferred. Configurations on PE

```
1: Configuration of PE 1 # sysname PE1 # ip vpn-instance vpna route-distinguisher 100:1 tnl-policy policy1 vpn-target 111:1 export-extcommunity vpn-target 111:1 import-extcommunity # ip vpn-instance vpnb route-distinguisher 100:2 tnl-policy policy2 vpn-target 222:2 export-extcommunity vpn-target 222:2 import-extcommunity # mpls lsr-id 1.1.1.1 mpls mpls te mpls rsvp-te
```

```
mpls te cspf
```

```
#
```

```
mpls ldp
```

```
# interface Pos1/0/0 link-protocol ppp
```

```
ip address 100.1.1.1 255.255.255.252
```

```
mpls
```

```
mpls te
```

```
mpls te max-link-bandwidth 20000
```

```
mpls te max-reservable-bandwidth 15000
```

```
mpls rsvp-te
```

```
mpls ldp
```

```
#
```

```
interface Pos2/0/0
```

```
link-protocol ppp
```

```
ip binding vpn-instance vpna
```

```
ip address 10.1.1.2 255.255.255.252
```



```
#
interface Pos2/0/1
link-protocol ppp
ip binding vpn-instance vpng
ip address 10.2.1.2 255.255.255.252
#
interface LoopBack1
ip address 1.1.1.1 255.255.255.255
#
interface Tunnel1/0/1
ip address unnumbered interface LoopBack1
tunnel-protocol mpls te
destination 2.2.2.2
mpls te tunnel-id 11 mpls te bandwidth bc0 5000 mpls te commit
#
interface Tunnel1/0/2 ip address unnumbered interface LoopBack1 tunnel-protocol mpls te destination 2.2.2.2mpls te
tunnel-id 22 mpls te bandwidth bc0 10000 mpls te reserved-for-binding mpls te commit # bgp 100 peer 2.2.2.2 as-
number 100 peer 2.2.2.2 connect-interface LoopBack1 # ipv4-family unicast undo synchronization peer 2.2.2.2 enable #
ipv4-family vpnv policy vpn-target peer 2.2.2.2 enable # ipv4-family vpn-instance vpna import-route direct
# ipv4-family vpn-instance vpng import-route direct # ospf 1 opaque-capability enable area 0.0.0.0 network 100.1.1.0
0.0.0.3 network 1.1.1.1 0.0.0.0 mpls-te enable # tunnel-policy policy1 tunnel binding destination 2.2.2.2 te Tunnel1/0/2 #
tunnel-policy policy2 tunnel select-seq cr-lsp lsp load-balance-number 3 #
```

returnUnder the preceding configurations, traffic cannot be distributed to the three tunnels. To implement load balancing, which of the following modifications are correct?

- A. Delete policy 1 from PE 1.
- B. Delete policy 1 in the vpna instance view.
- C. Create a TE tunnel to 2.2.2.2 on PE 1.
- D. Create a GRE tunnel to 2.2.2.2 on PE 1.

Correct Answer: AC

QUESTION 9

Which statement about the Ethernet clock synchronization technology used in actual solutions is true?



- A. The IEEE 1588 technology requires the intermediate node to support transparent clock transmission
- B. The CES packet recovery technology requires the intermediate node to support transparent clock transmission
- C. The NTP technology requires the intermediate node to support transparent clock transmission
- D. The 802.1AS technology requires the intermediate node to support transparent clock transmission

Correct Answer: A

QUESTION 10

Which of the following will cause an MPLS L2VPN VC to be Down?

- A. Public LDP LSP tunnels are not Up.
- B. Interfaces connecting PEs to CEs use VLAN encapsulation, but the VLAN IDs are different.
- C. In Martini L2VPN, interfaces connecting PEs to CEs at both ends of a VC are configured with different VC IDs.
- D. In Kompella L2VPN, the two PEs allocate the same CE ID for the CEs connected to them.

Correct Answer: AD

QUESTION 11

Which statement about MPLS Echo packets is true?

- A. The MPLS Echo request is an ICMP packet.
- B. The MPLS Echo request is a UDP packet.
- C. The type value of the MPLS Echo request packet is 0.
- D. The type value of the MPLS Echo reply packet is 8

Correct Answer: B

QUESTION 12

```
[Quidway]multicast routing-enable [Quidway]interface Ethernet10/1/0 [Quidway-Ethernet10/1/0]igmp enable [Quidway-Ethernet10/1/0]igmp robust-count 4 [Quidway-Ethernet10/1/0]quit [Quidway]igmp [Quidway-igmp]timer query 100 [Quidway-igmp]robust-count 3
```

The default IGMP query interval is 60s and the default query response interval is 10s. If Ethernet 10/1/0

receives an IGMP Report message, how long is the timeout interval for creating a group record?

- A. 310s
- B. 250s



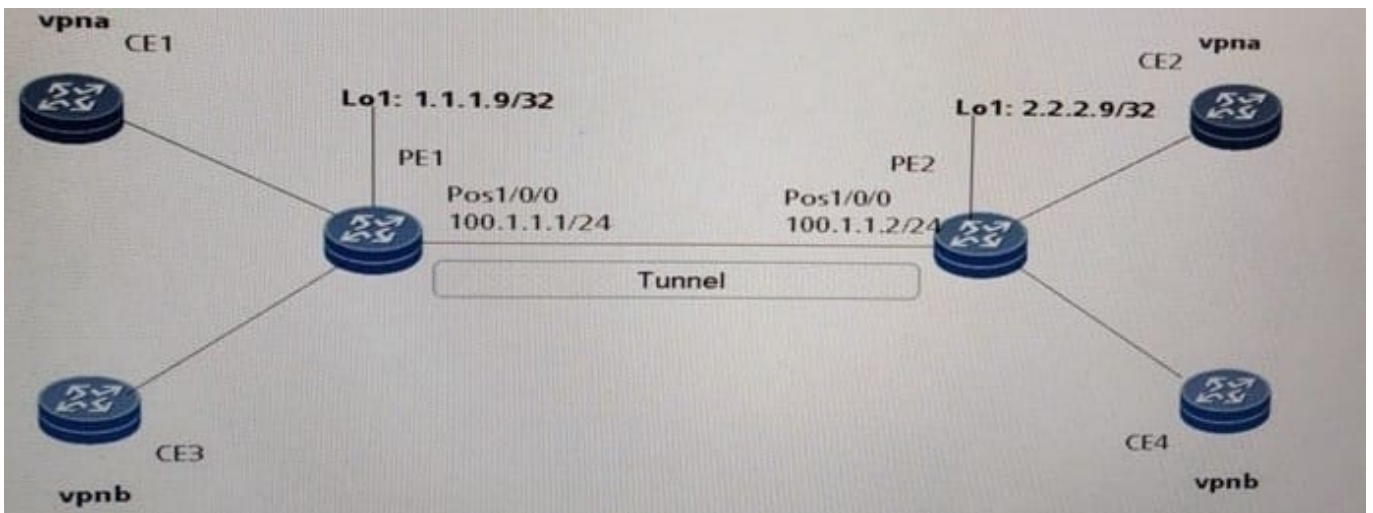
C. 410s

D. 130s

Correct Answer: C

QUESTION 13

As shown in the figure , CE and CE 2 belong to VPN A, CE 3 and CE 4 belong to VPN B, VPN A and VPN B share the public network tunnels between border PE 1 and PE 2, and LDP tunnels are configured between PE 1 and PE 2. To isolate resources for VPN service data from PE 2 to PE 1, a unidirectional TE tunnel is configured t forward data from PE1. The QoS policy propagation though the border gateway protocol (QPPB) feature is configured on PE 2, and a QoS policy is defined when VPNs are bound to tunnel interfaces.





```
Global MPLS configuration on PE 2:
#
mpls lsr-id 2.2.2.9
mpls
mpls te
lsp-trigger all
mpls rsvp-te
#
mpls ldp
#
Interface configuration on PE 2:
interface Pos1/0/0
link-protocol ppp
ip address 100.1.1.2 255.255.255.0
mpls
mpls te
mpls te max-link-bandwidth 10000
mpls te max-reservable-bandwidth 5000
mpls rsvp-te
mpls ldp
qppb-policy qos-local-id destination

traffic-policy trpolicy outbound
#
interface Tunnel1/0/0
ip address unnumbered interface LoopBack1
tunnel-protocol mpls te
destination 1.1.1.9
mpls te tunnel-id 22
mpls te bandwidth bc0 10000
mpls te vpn-binding vpn-instance vpna qos-local-id 1 bandwidth 1000
mpls te vpn-binding vpn-instance vpnb qos-local-id 2 bandwidth 1000
#
```



Which of the following statements about the configurations on PE 2 are true?

- A. The mpls te commit command must be configured on the Tunnel1/0/0 interface,
- B. The mpls te cspf command must be configured in the global MPLS view.
- C. The maximum reserved bandwidth must not exceed the bandwidth of the tunnels.
- D. The maximum reserved bandwidth must not exceed the bandwidth of the physical links.
- E. The mpls te commit command must be configured on the Post/0/0 interface.

Correct Answer: ABD

QUESTION 14

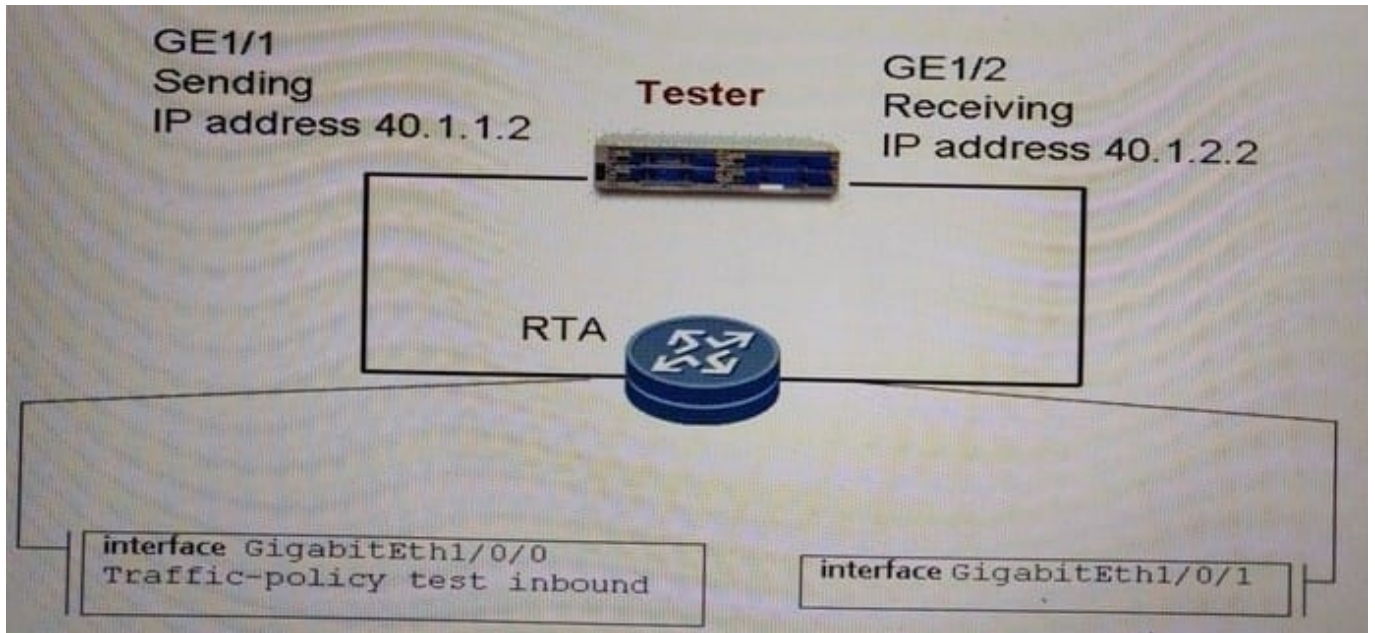
The RADIUS or Huawei Terminal Access Controller Access Control System (HWTACACS) protocol can be used for authentication during network access. Which of the following statements about these two protocols are false?

- A. The HWTACACS uses TCP to transmit data while the RADIUS uses UDP to transmit data.
- B. Both the HWTACACS and RADIUS encrypt all data in the packet body.
- C. The RADIUS uses the Triple Data Encryption Standard (3Des) to encrypt passwords and some important data packets. The RADIUS provides a higher level of security than the HWTACACS.
- D. The RADIUS implements authentication and authorization separately to improve security

Correct Answer: BCD

QUESTION 15

Exhibit.



As shown in the figure, complex traffic classification is configured for RTA's upstream GigabitEthernet 1/0/0. The QoS is configured as follows:



```
[Quidway-GigabitEthernet18/0/0]display this
interface GigabitEthernet11/0/0
undo shutdown
ip address 40.1.1.1 255.255.255.0
traffic-policy test inbound
[Quidway]display traffic policy user-defined test
User Defined Traffic Policy Information:
Policy: test
Classifier: default-class
Behavior: be
-none-
Classifier: test
Behavior: test
Marking:
Remark DSCP ef
[Quidway]display traffic classifier user-defined test
User Defined Classifier Information:
Classifier: test
Operator: AND
Rule(s): if-match acl 3000
if-match dscp af11
[Quidway]display acl 3000
Advanced ACL 3000, 1 rule
Acl's step is 5
rule 15 permit tcp destination 40.1.2.2 0
```

A tester sends TCP packets from GE 1/1 to GE 1/2 at 40.1.2.2 IF DSCP values of packets GE receives are not 46, what are the possible causes?

- A. The default mapping from the EF value to the DSCP value is modified
- B. DSCP values of sent packets are not 10.
- C. The qos phb command is enabled on RTA's GigabitEthernet1/0/0.
- D. STC is disabled at RTA's GigabitEthernet 1/0/0.

Correct Answer: B



VCE & PDF

PassApply.com

<https://www.passapply.com/h31-161.html>

2024 Latest passapply H31-161 PDF and VCE dumps Download

[Latest H31-161 Dumps](#)

[H31-161 VCE Dumps](#)

[H31-161 Practice Test](#)