



DES-5121^{Q&As}

Specialist - Implementation Engineer - Campus Networking Exam

Pass EMC DES-5121 Exam with 100% Guarantee

Free Download Real Questions & Answers **PDF** and **VCE** file from:

<https://www.passapply.com/des-5121.html>

100% Passing Guarantee
100% Money Back Assurance

Following Questions and Answers are all new published by EMC
Official Exam Center

-  **Instant Download** After Purchase
-  **100% Money Back** Guarantee
-  **365 Days** Free Update
-  **800,000+** Satisfied Customers





QUESTION 1

Which RSTP-PV features are embedded and cannot be disabled?

- A. DirectLink Rapid Convergence and DirectLink Fast Rapid Convergence
- B. IndirectLink Rapid Convergence and IndirectLink Fast Rapid Convergence
- C. DirectLink Rapid Convergence and IndirectLink Fast Rapid Convergence
- D. DirectLink Fast Rapid Convergence and IndirectLink Rapid Convergence

Correct Answer: C

Reference: <https://www.manualslib.com/manual/858353/Dell-Networking-N4000-Series.html?page=724>

QUESTION 2

A network administrator added a new Dell EMC N-Series switch into their network with RSTP configured. The spanning-tree priority on all existing switches has been left at the default value. If the administrator wants this new switch to become the spanning tree root, which command should be used?

- A. spanning-tree priority 4096
- B. spanning-tree priority 32768
- C. spanning-tree priority 36864
- D. spanning-tree priority 61440

Correct Answer: A

Reference: <https://www.dell.com/support/article/en-us/how10394/how-to-manage-rapid-spanning-tree-rstp-thru-command-line-on-dell-networking-powerconnect-switches?lang=en>

QUESTION 3

A user's workstation has an IP phone connected to a Dell EMC N-Series switch.

What is the recommended number of VLANs that should be configured on the switch port?

- A. 0
- B. 1
- C. 2
- D. 3

Correct Answer: C



QUESTION 4

What are key features of the Dell EMC N4064 or N4064F switches?

- A. Up to 640 Gbps switch fabric capacity and hot swap expansion module support for dual QSFP+ (8 x 10GbE)
- B. Up to 1.0 Tbps switch fabric capacity and up to 48-line rate 10GbE ports per switch
- C. Up to 1.2 Tbps switch fabric capacity and up to 64-line rate 10GbE ports per switch
- D. Up to 48-line rate 10GbE ports per switch and hot swap expansion module support for dual QSFP+ (8 x 10GbE)

Correct Answer: A

Reference: https://i.dell.com/sites/csdocuments/Shared-Content_data-Sheets_Documents/en/aa/Dell_Networking_N4000_Series_SpecSheet.pdf

QUESTION 5

In a PoE environment, what information does the Network Policy TLV exchange between the PSE and PD?

- A. Required Power, VLAN ID, and DSCP Value
- B. VLAN ID, IEEE Priority, and DSCP Value
- C. IEEE Priority, Required Power, and VLAN ID
- D. DSCP Value, Required Power, and IEEE Priority

Correct Answer: B

Reference: http://ftp.dell.com/manuals/all-products/esuprt_ser_stor_net/esuprt_networking/poweredge-m-io-aggregator_Concept-Guide4_en-us.pdf page 162

QUESTION 6

Which default security level can be assigned to limit access of a specific user to a Dell EMC N-Series switch?

- A. Level 0
- B. Level 1
- C. Level 5
- D. Level 15

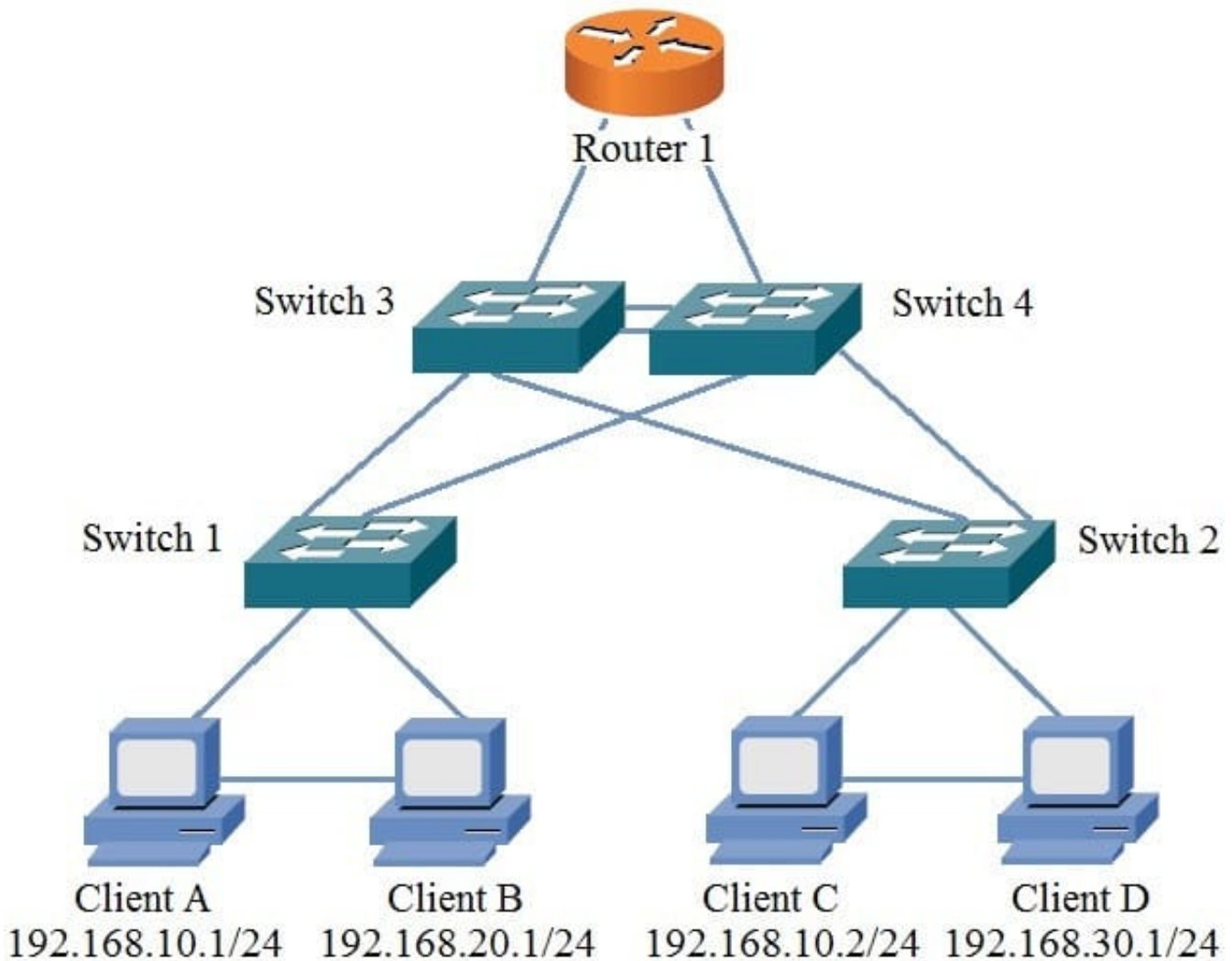
Correct Answer: A

Reference: https://www.dell.com/support/manuals/us/en/04/force10-s4048-on/s4048_on_9.9.0.0_config_pub-v1/configuring-privilege-levels?guid=guid-2fa480e0-1660-41d8-8ac2-45aa90d5bb71andlang=en-us



QUESTION 7

Refer to the Exhibit.



If Client B sends a packet to Client A, what is the highest level of the network hierarchy that the packet will transverse?

- A. Distribution
- B. Network
- C. Access
- D. Core

Correct Answer: D

QUESTION 8

You are tasked with deploying a single Dell EMC N-Series switch with a 2-port port-channel to uplink to an existing



upstream switch. The following reflects the upstream switch configuration:

```
N4032F#show running-config interface tengigabitethernet 1/0/5 channel-group 1 mode on
N4032F#show running-config interface tengigabitethernet 1/0/6 channel-group 1 mode on
```

Which type of port-channel should be configured to successfully uplink?

- A. Active
- B. MLAG
- C. Static
- D. Passive

Correct Answer: C

QUESTION 9

Which packet characteristics can policy-based routing be configured to match against?

- A. TTL, TCP Port, and L3 Packet Length
- B. L3 Packet Length, TTL, and 802.1p Priority
- C. TCP Port, L3 Packet Length, and 802.1p Priority
- D. TCP Port, TTL, and 802.1p Priority

Correct Answer: C

QUESTION 10

DRAG DROP

What is the typical sequence of steps to upgrade the firmware of a Dell EMC N-Series switch?

Select and Place:



Copy the firmware image from the TFTP server to the switch	Step 1
Configure and start the TFTP server	Step 2
Update the boot code on the switch and reboot	Step 3
Backup the running-config to a TFTP server	Step 4
Select the new image for the next boot	Step 5

Correct Answer:

	Configure and start the TFTP server
	Backup the running-config to a TFTP server
	Copy the firmware image from the TFTP server to the switch
	Select the new image for the next boot
	Update the boot code on the switch and reboot

QUESTION 11

What is the recommended maximum number of routers, per area, when using OSPF?

- A. 50
- B. 100
- C. 200 D. 255



Correct Answer: A

QUESTION 12

How many untagged VLANs are allowed on a switchport mode trunk interface?

- A. 0
- B. 1
- C. 128
- D. 4096

Correct Answer: B

QUESTION 13

N4032F#show interfaces status

Port	Description	Duplex	Speed	Neg	Link State	Flow Ctrl	M	VLAN
Te1/0/5		Full	100	Off	Up	On	A	1
Te1/0/6		Full	1000	Off	Up	Off	A	1

Port Channel	Description	Link State	M	VLAN
Po1		Up	A	1

N4032F#show interfaces port-channel 1

Channel	Ports	Ch-Type	Hash Type	Min-Links	Local Prf	Rx Util	Tx Util
Po1	Active: Te1/0/5 Inactive: Te1/0/6	Dynamic	7	1	Disabled	0	0

Hash Algorithm Type 1 - Source MAC, VLAN, EtherType, source module and port Id 2 - Destination MAC, VLAN, EtherType, source module and port Id 3 - Source IP and source TCP/UDP port 4 - Destination IP and destination TCP/UDP port 5 - Source/Destination MAC, VLAN, EtherType, source MODID/port 6 - Source/Destination IP and source/destination TCP/UDP port 7 - Enhanced hashing mode

N4032F#

A Dell EMC N-Series switch has been configured with a 2-member port-channel; however, only one link is currently active.

Based on the exhibit, why is only one link active?

- A. Minimum links value for Po1 is set to "1"



- B. Hash algorithm is configured for active-passive
- C. Te1/0/6 interface is administratively disabled
- D. Speed setting is different between ports

Correct Answer: D

QUESTION 14

Which type of an attack is considered MAC poisoning?

- A. Duplicating the MAC address of a legitimate device so frames are forwarded to the incorrect port
- B. Host imitating a trunk port by using tagging and trunking protocols
- C. Flooding MAC addresses to the switch to fill its CAM table, causing the switch to act as a hub
- D. Host on a VLAN gaining unauthorized access to other VLANs on the network

Correct Answer: A

QUESTION 15

A user's host with an IP address of 172.16.1.22/24 is attempting to FTP a file from the server with IP address 10.1.1.99; however, they are unable to connect.

Which access-list is preventing this traffic?

- A. # ip access-list ACL1 # deny ip any host 10.1.1.99
- B. # ip access-list ACL2 # permit ip 172.16.1.0 0.0.0.255 any
- C. # ip access-list ACL3 # deny ip any 172.16.2.0 0.0.0.255
- D. # ip access-list ACL4 # permit ip host 172.16.1.22 host 10.1.1.99

Correct Answer: A

[Latest DES-5121 Dumps](#)

[DES-5121 VCE Dumps](#)

[DES-5121 Practice Test](#)